



DESIGN VISION



A – RENOVATE

- Roof, HVAC, ceiling, flooring repairs
- Window replacement
- Mold remediation
- Repair gymnasium
- Remediate Fields of Debris
- Demo & Reconstruct 200 & 300 wing
- Renovate Science Classrooms
- Renovate Shop
- Renovate Weight Room & Lockers
- Unify exterior facade

B – RENOVATE & EXPANSION

- Option A plus below;
- Improve Circulation
- Stair/Elevator Circulation Links
- Demo & Reconstruct library
- Gymnasium Addition
- Relocate Stadium to Minuteman Field
- New Practice Field
- PAC Addition
- Field House Addition
- Unify exterior facade

C – NEW HIGH SCHOOL

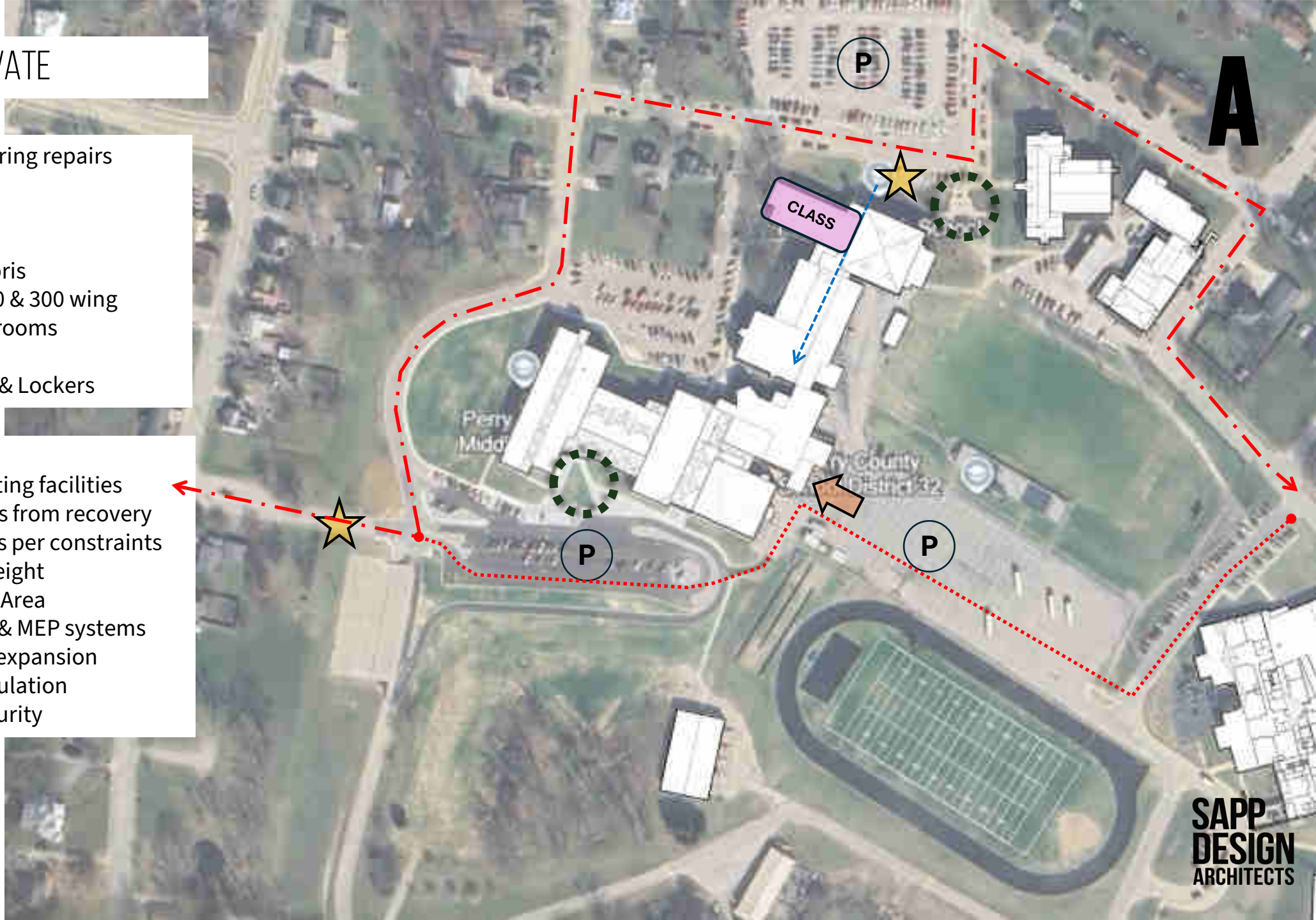
- Demo existing High School
- Demo Vocational & Maintenance
- Expand Parking & Greenspace
- Re-route Roadways
- Entry Quad with Central Office
- Relocate Stadium to Minuteman Field
- New Practice Field
- PAC attached to High School
- New High School at existing stadium

DESIGN VISION – RENOVATE

- Roof, HVAC, ceiling, flooring repairs
- Window replacement
- Mold remediation
- Repair gymnasium
- Remediate Fields of Debris
- Demo & Reconstruct 200 & 300 wing
- Renovate Science Classrooms
- Renovate Shop
- Renovate Weight Room & Lockers

Pro/Cons

- Improvements to existing facilities
- Leverages investments from recovery
- Limited improvements per constraints
 - Floor to Floor height
 - Code Allowable Area
 - Aging structure & MEP systems
 - Landlocked for expansion
- Does not improve circulation
- Does not improve Security

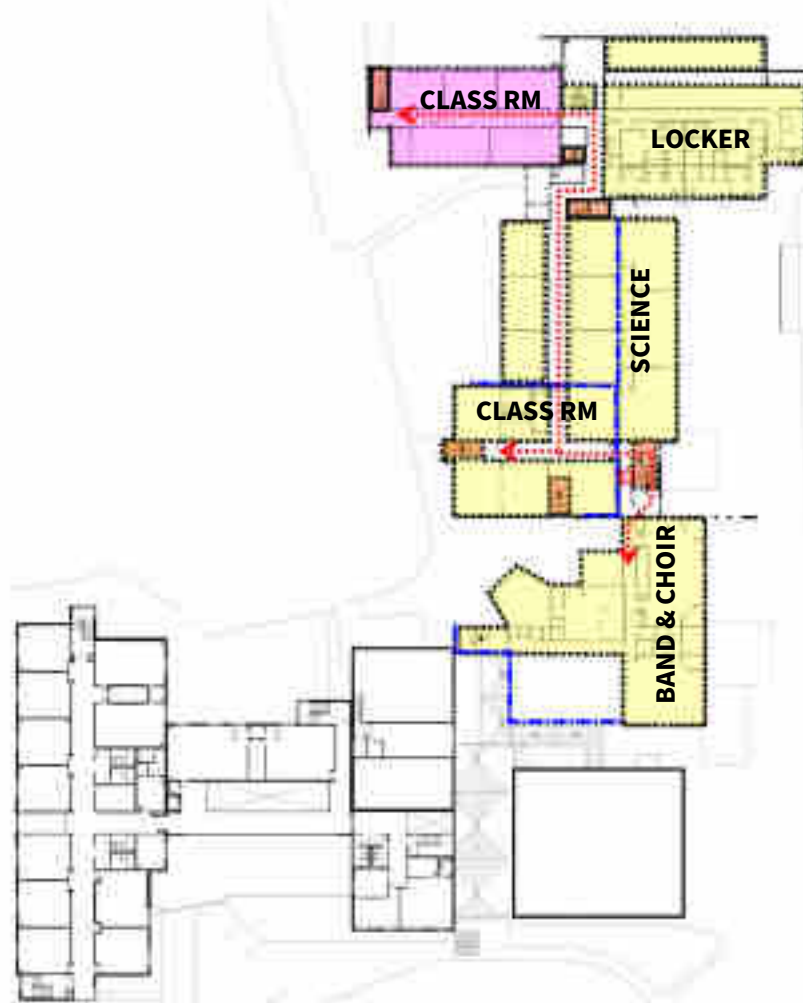


DESIGN VISION – RENOVATE

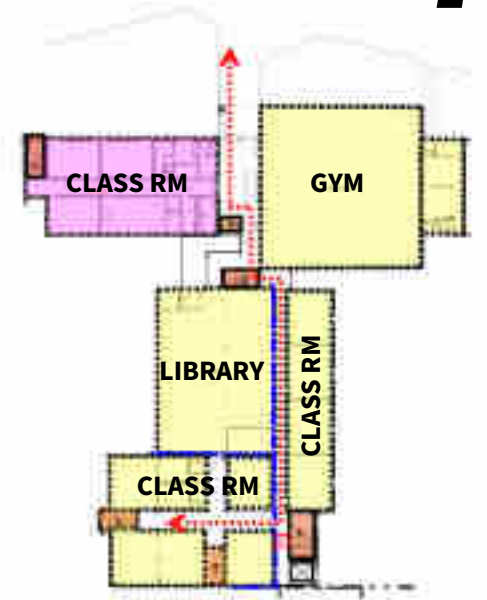
- Demo & Reconstruct 200 & 300 wing
- Renovate Stage for other purposes
- Locker Room & Weight room renovation
- Library renovation
- Science & Classroom renovation
- Restroom Renovation for ADA compliance
- Renovate Shop
- Unify exterior facade



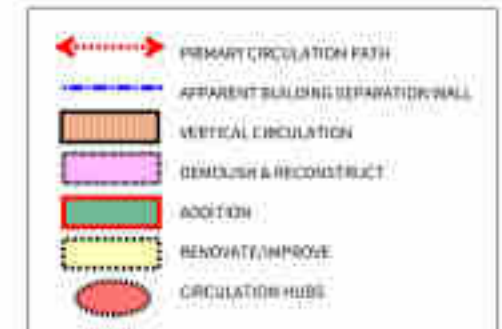
FIRST FLOOR



SECOND FLOOR



THIRD FLOOR



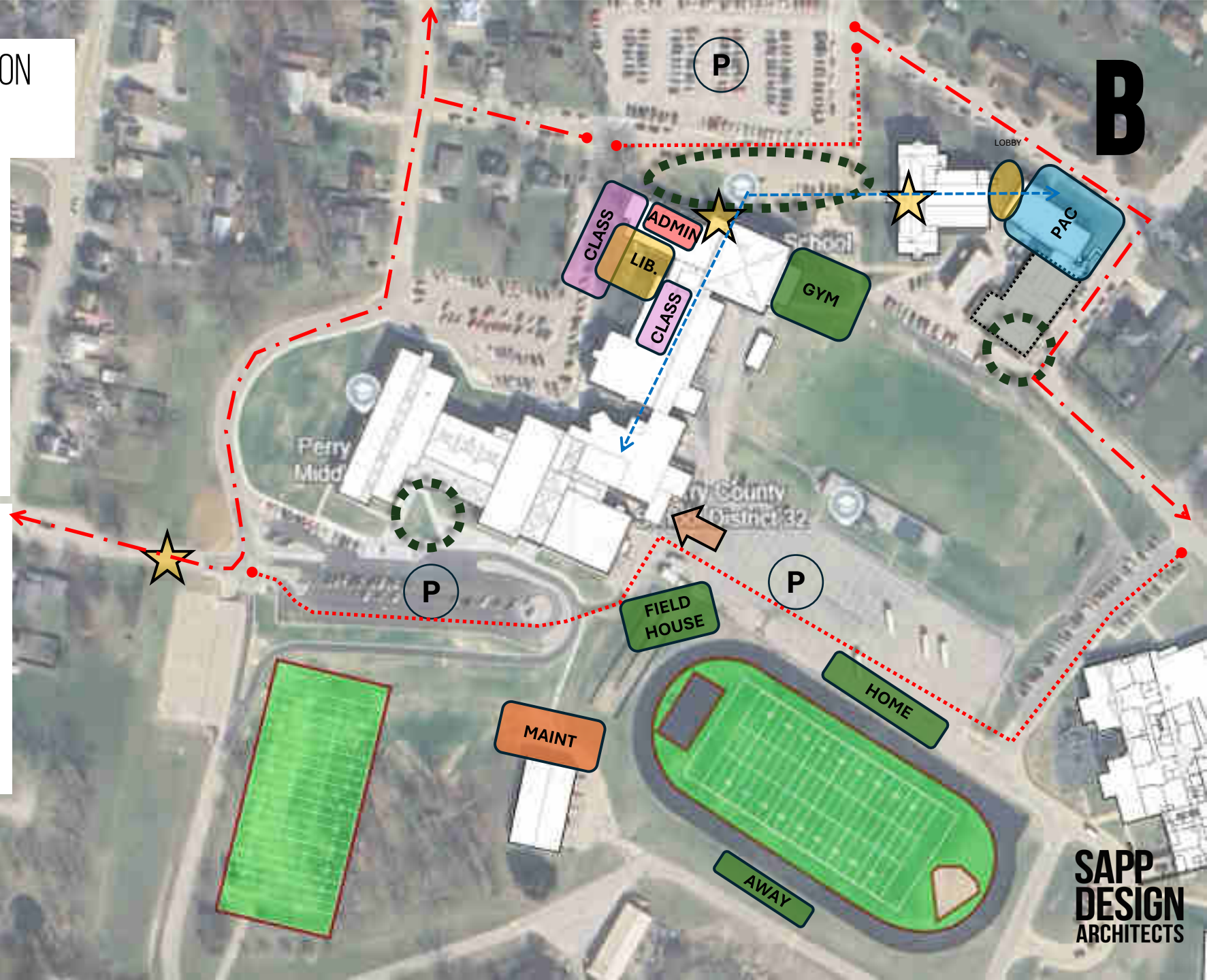
A

DESIGN VISION – RENOVATE & EXPANSION

- Demo & Reconstruct 200 & 300 wing
- Library Addition
- Renovate existing library to classrooms
- Gymnasium Addition
- PAC Addition to Central Office
- Field House Addition
- Maintenance Building Addition
- Relocate Stadium to Minuteman Field
- Further Development of New Practice Field

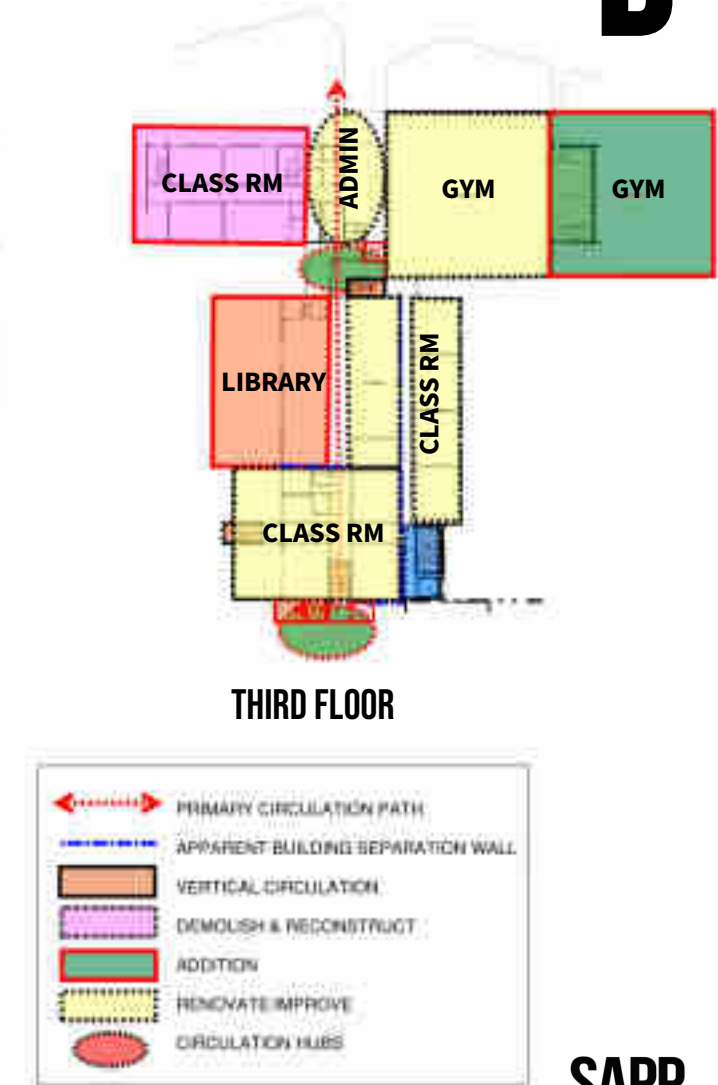
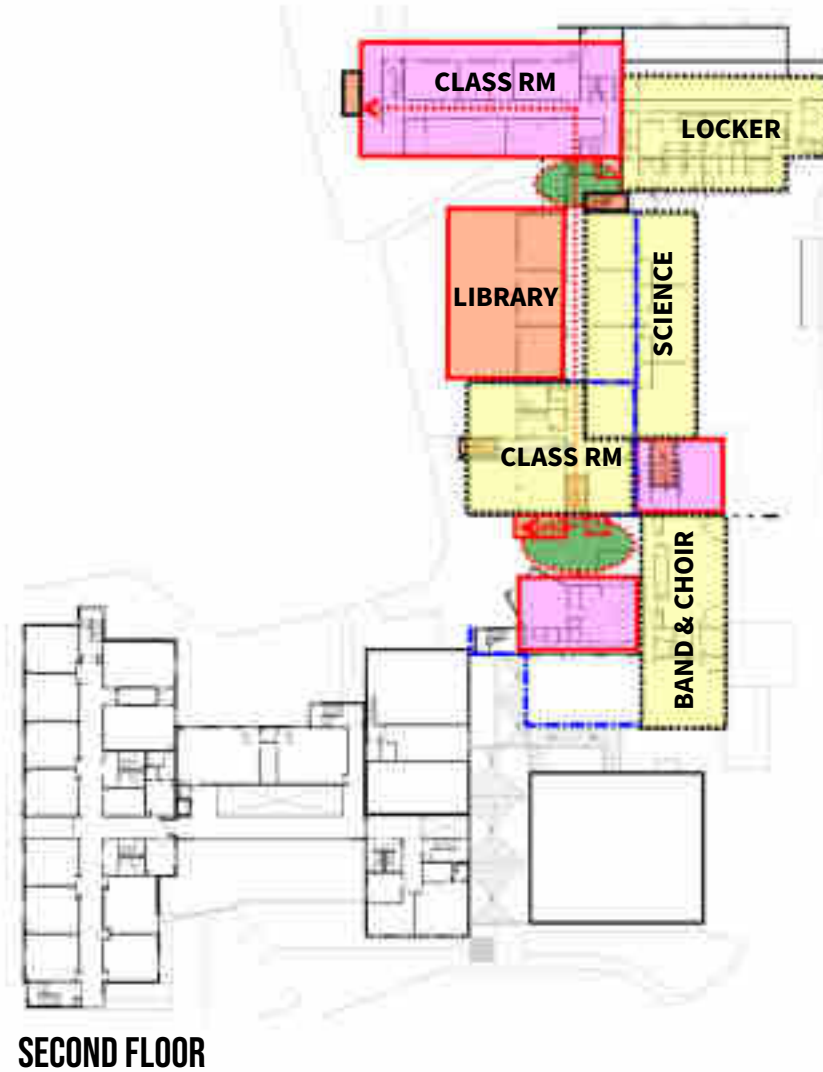
Pro/Cons

- Leverages investments from recovery
- Limited improvements per constraints
- Reconfig. Entry Drive (Pedestrian buffer)
- Private Drive
- Expansion of OSH w/ PAC addition
- Improved Sense of Arrival from all directions
- Improved Circulation & Security



DESIGN VISION – RENOVATE & EXPANSION

- Improve Circulation
- Stair/Elevator Circulation Links
- Reduce amount of stairs
- Demo & Reconstruct 200 & 300 wing
- Demo & Reconstruct library
- Gymnasium Addition, Demo Stage
- Locker Room & Weight room renovation
- Science & Classroom renovation
- Restroom Renovation for ADA compliance
- Renovate Shop
- Unify exterior façade



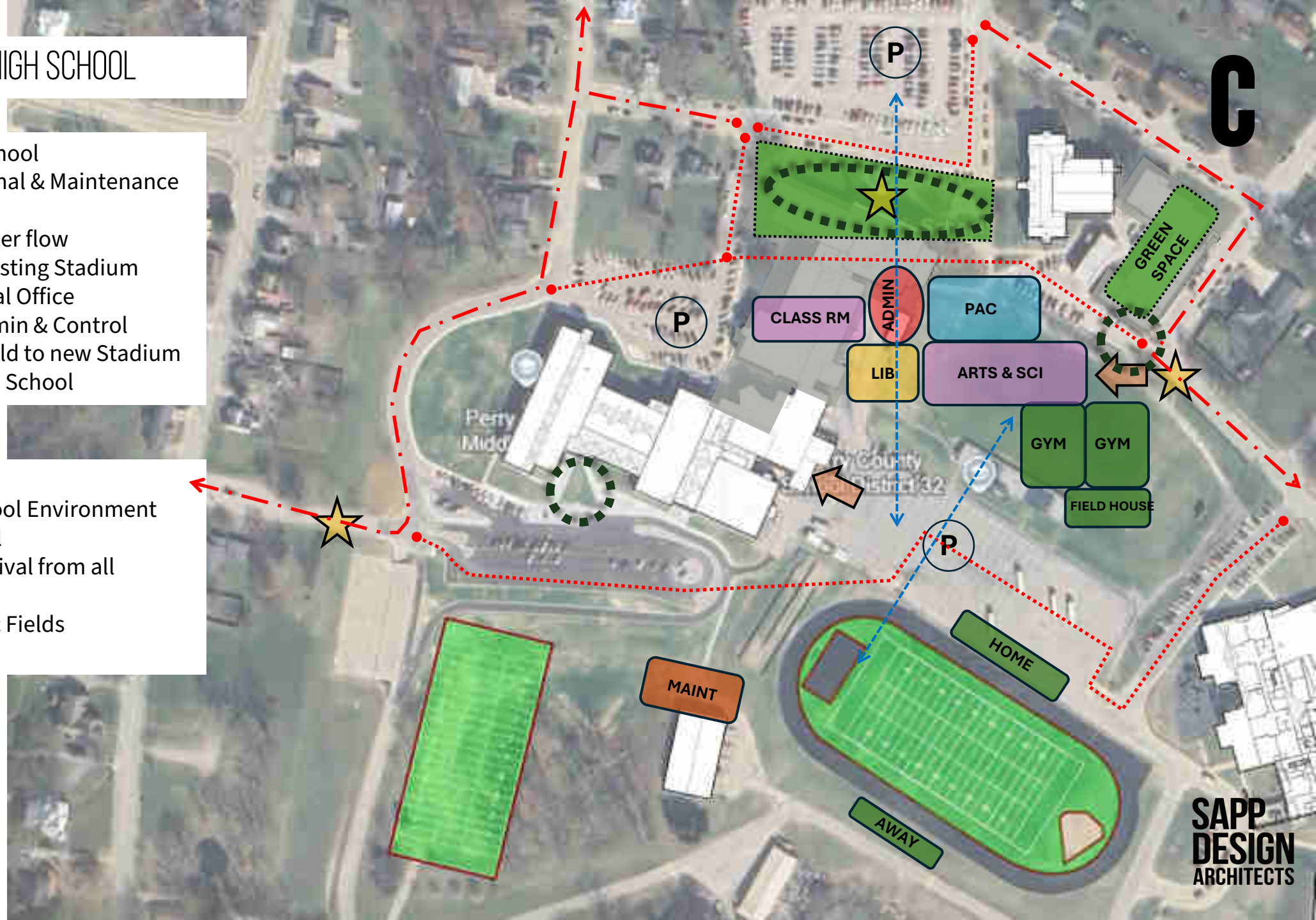
B

DESIGN VISION – NEW HIGH SCHOOL

- Demo existing High School
- Demo existing Vocational & Maintenance
- Expand parking
- Re-route roads for better flow
- New High School at existing Stadium
- Entry Quad with Central Office
- Central Commons, Admin & Control
- Update Minuteman Field to new Stadium
- PAC connected to High School

Pro/Cons

- 21st Century High School Environment
- Good Security/Control
- Improved Sense of Arrival from all directions
- Connection to Athletic Fields

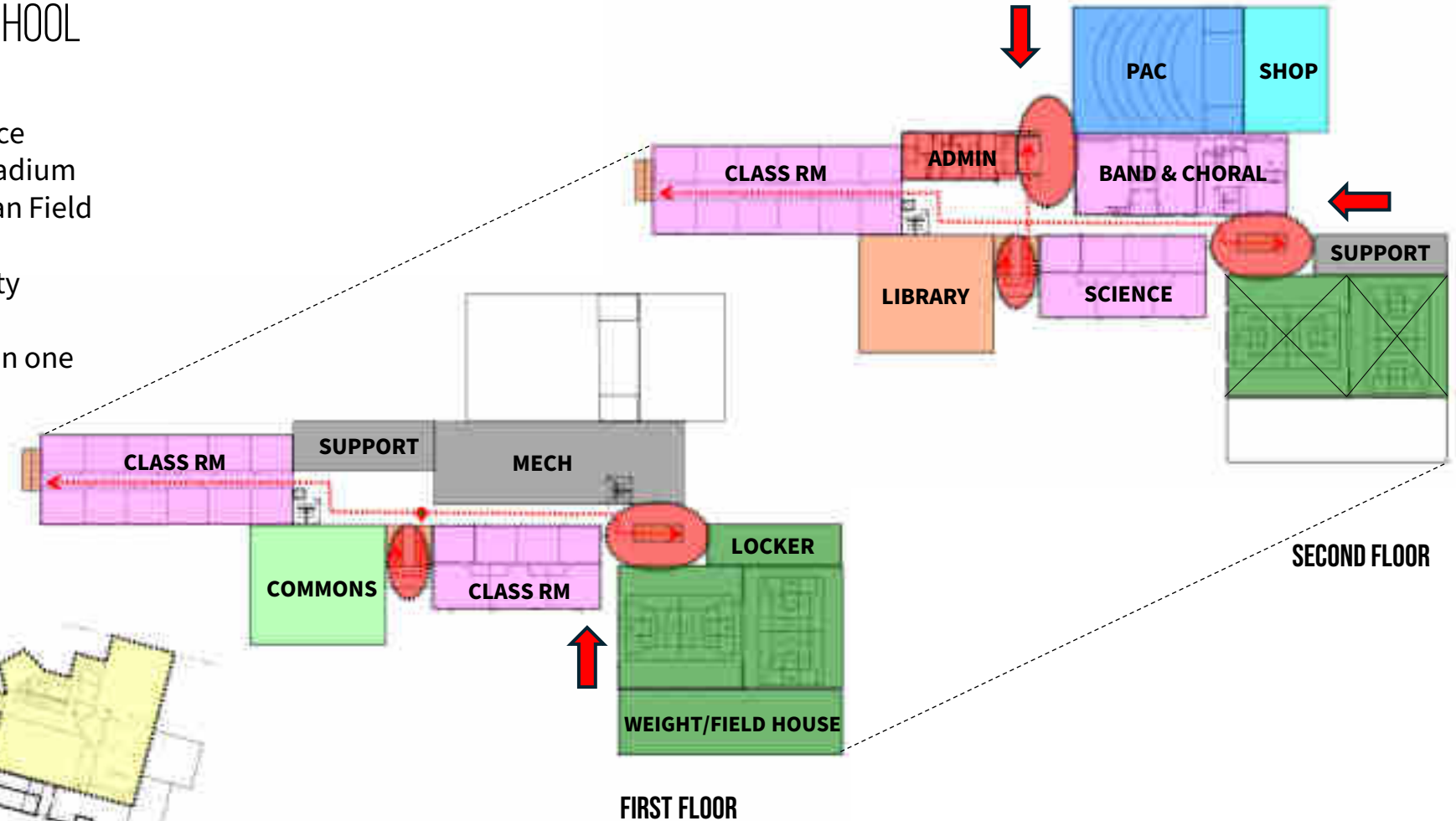


DESIGN VISION – NEW HIGH SCHOOL

- Demo existing High School
- Demo Vocational & Maintenance
- New High School at existing stadium
- Relocate Stadium to Minuteman Field
- New Practice Field
- Simplified circulation & Security
- FEMA shelter with-in school
- Consolidation of all programs in one building
- New identity



MIDDLE SCHOOL - FIRST FLOOR





A – RENOVATE

- Roof, HVAC, ceiling, flooring repairs
- Window replacement
- Mold remediation
- Repair gymnasium
- Remediate Fields of Debris
- Demo & Reconstruct 200 & 300 wing
- Renovate Science Classrooms
- Renovate Shop
- Renovate Weight Room & Lockers
- Unify exterior facade

\$22M –\$25M

B – RENOVATE & EXPANSION

- Option A plus below;
- Improve Circulation
- Stair/Elevator Circulation Links
- Demo & Reconstruct library
- Gymnasium Addition
- Relocate Stadium to Lower Field
- New Practice Field
- PAC Addition
- Field House Addition
- Unify exterior facade

\$58M –\$63M

C – NEW HIGH SCHOOL

- Demo existing High School
- Demo Vocational & Maintenance
- Expand Parking & Greenspace
- Re-route Roadways
- Entry Quad with Central Office
- Relocate Stadium to Minuteman Field
- New Practice Field
- PAC attached to High School
- New High School at existing stadium

\$75M –\$80M