

PRE-DESIGN WORKSHOP

Workshop Overview

The pre-design workshop invited library staff and community members to actively participate in the planning process by using tracing paper to draw over existing library plans. This hands-on activity enabled collaborative and creative thinking to reimagine the library spaces.

Interactive Focus Groups:

We conducted two pre-design sessions, each lasting between 2 hrs and involving 3 groups with at least 3 participants per pre-design group.

- **Session Dynamics:** The sessions were dynamic and interactive, with community members often joining discussions as we walked through the library. Conversations centered around immediate ideas for improvements.
- **Key Insight:** There was a strong consensus on the need for a new entrance to the library and/or the Recreation Center.

Visualizing the Future.

- **We looked at the space and realigned services:**
 - Assessed the current state of the library's physical space, including layout, aesthetics, and accessibility.
 - Visualized the future of the library.
- **Library Services:**
 - Evaluated the existing services, including traditional lending services, digital literacy programs, and online tools.
 - Analyzed how to improve library services.

Future Needs

The pre-design workshops have generated a variety of sketches and design ideas aimed at improving the library space and services. These sketches, completed by library staff and community members, highlight potential configurations and enhancements that align with both the immediate and long-term needs of the library.

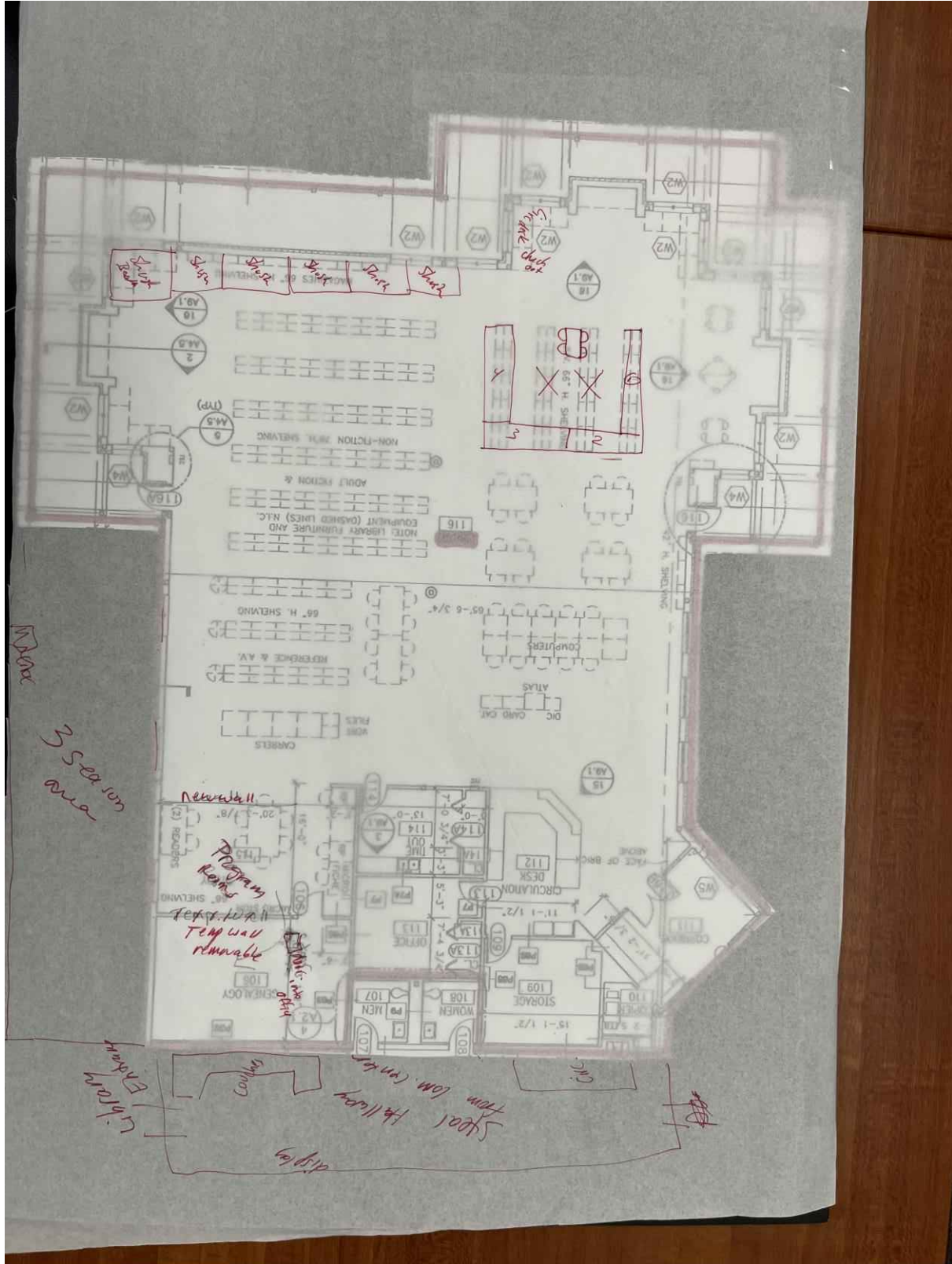
The following images encapsulate the collaborative efforts and valuable insights gained during the pre-design workshop, setting a solid foundation for the next steps in the library's improvement plan.

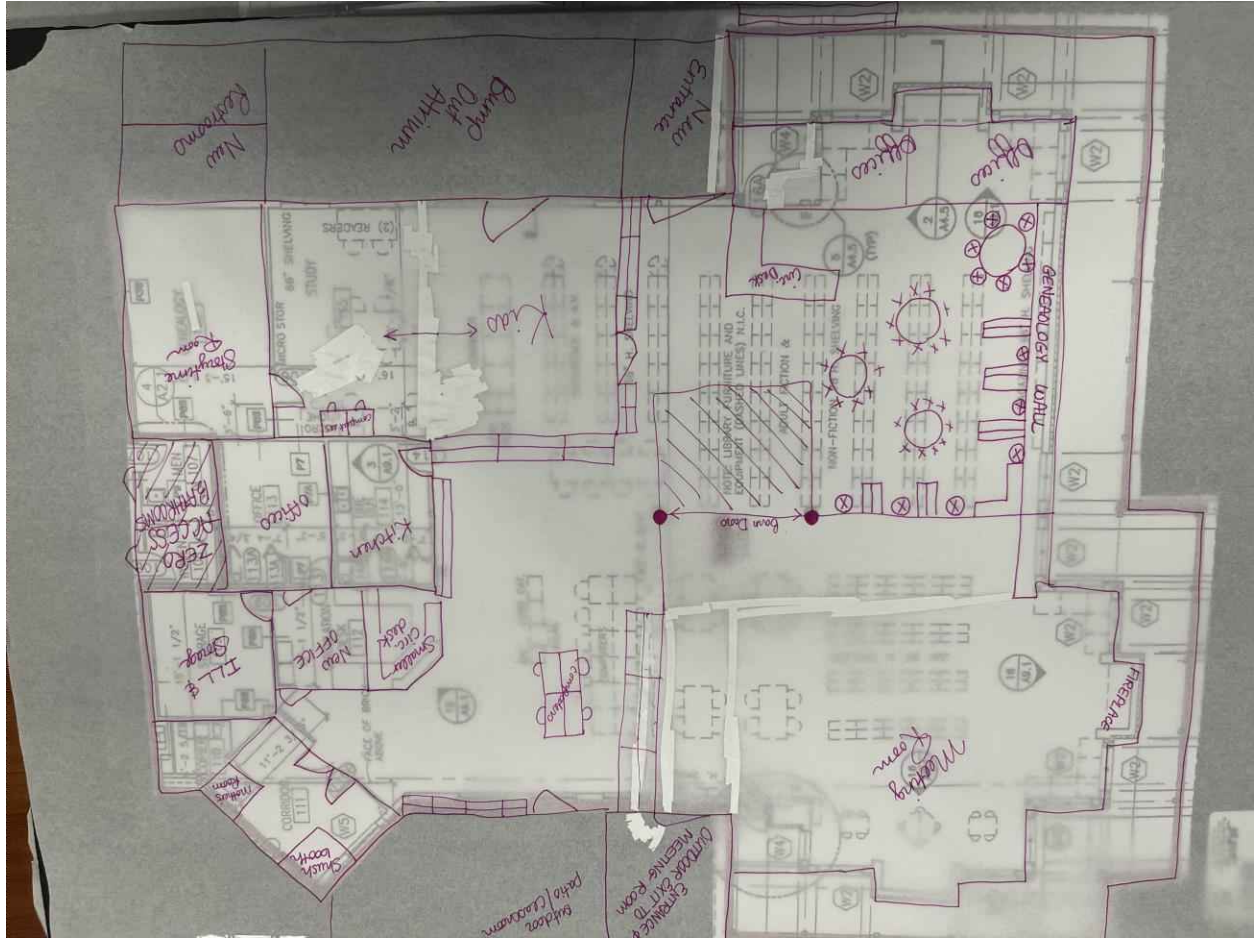
NOTE: the planning workshop illustrates that the library is too small. We could not provide a design that meets the needs of Ste. Genevieve County Public Library.

PRELIMINARY ANALYSIS
STE. GENEVIEVE COUNTY PUBLIC LIBRARY



PRELIMINARY ANALYSIS
STE. GENEVIEVE COUNTY PUBLIC LIBRARY

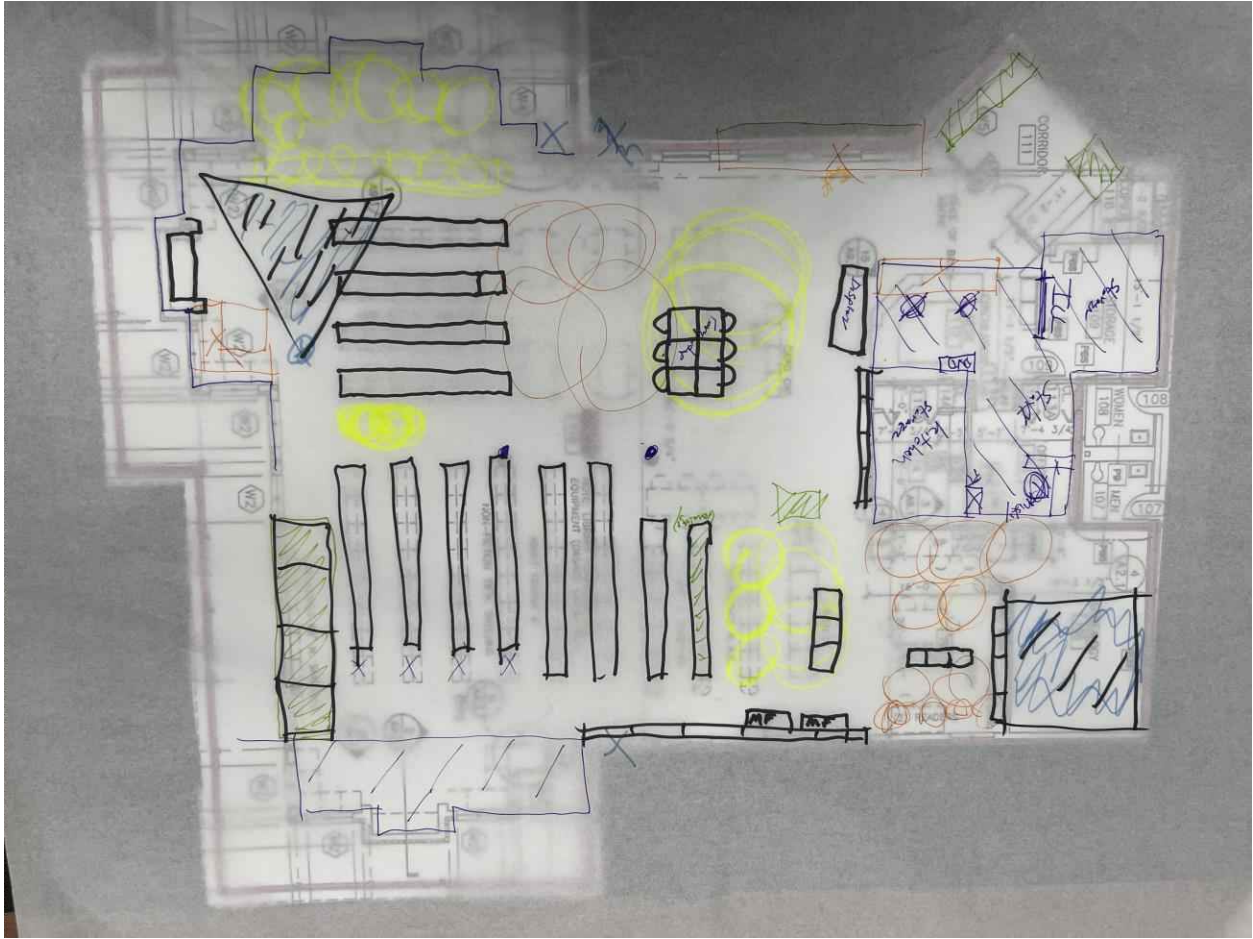




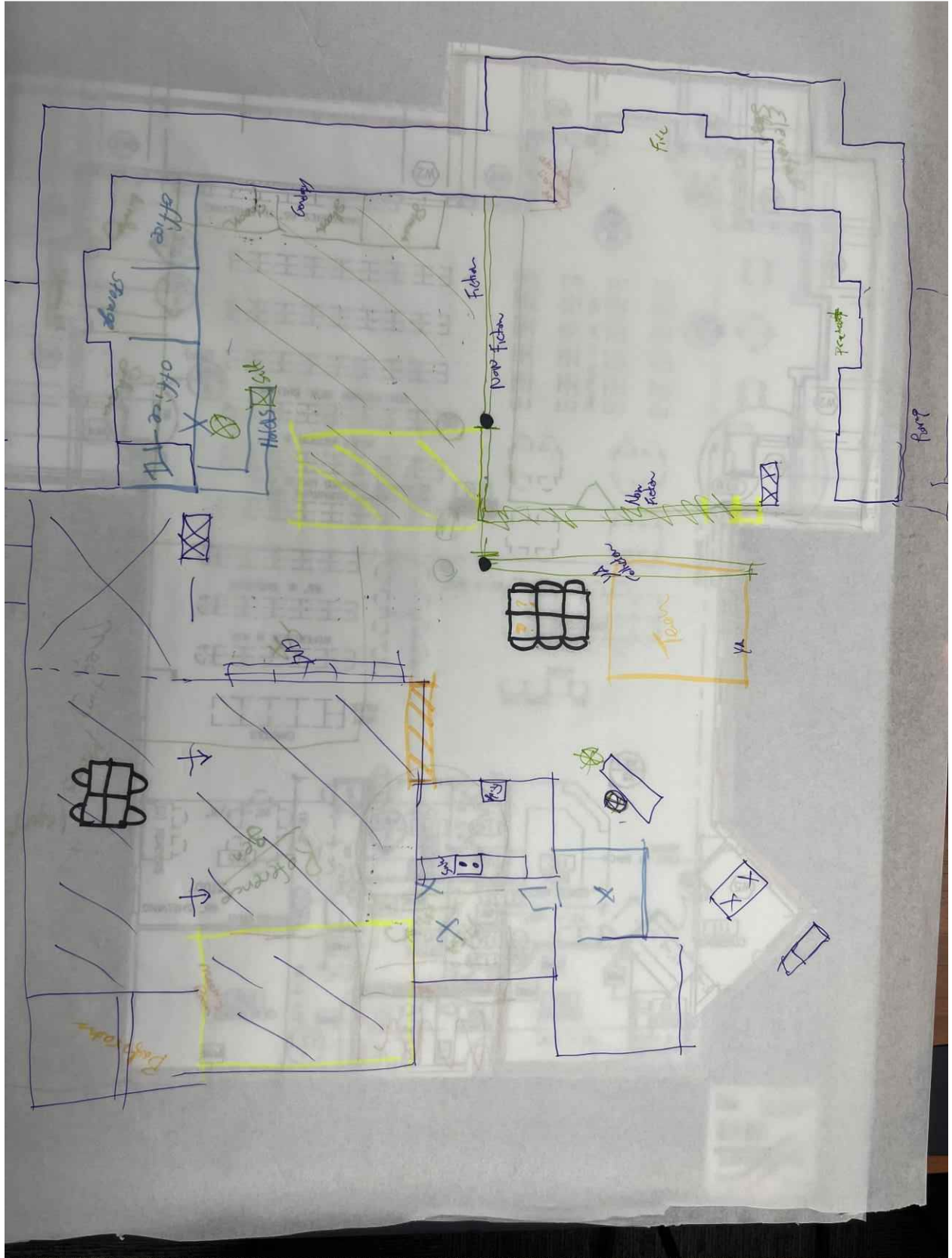
PRELIMINARY ANALYSIS
STE. GENEVIEVE COUNTY PUBLIC LIBRARY



PRELIMINARY ANALYSIS
STE. GENEVIEVE COUNTY PUBLIC LIBRARY



PRELIMINARY ANALYSIS
STE. GENEVIEVE COUNTY PUBLIC LIBRARY



PRELIMINARY ANALYSIS
STE. GENEVIEVE COUNTY PUBLIC LIBRARY



ALTERNATIVE LOCATIONS

In addition to the workshop and visual scans, the consultant explored other potential locations in Ste. Genevieve. We were analyzing how the County could provide the additional space required. This includes one sq. ft. per capita or target of Library space in Ste. Genevieve County. This will help us better understand the community context and to identify alternative spaces that could serve the library's evolving needs. Below are two sites that support the demands for library space and future growth. Starting projects now ensures cost-effectiveness, avoiding higher future expenses.

After numerous meetings, reviews, and assessments, it is our opinion that an additional space in the downtown area would help alleviate some of the concerns identified in our study. A downtown location would not only expand the library to the ideal size of 18,000 square feet but also facilitate access via walkability from two major schools located less than a mile from the proposed downtown site. This strategic placement would enhance community engagement and make library resources more accessible to young students and residents alike.

Additionally, considering a potential location in Bloomsdale could further extend our library's reach. A Bloomsdale branch would cater to the needs of that community segment, providing valuable services and resources locally. This dual expansion approach could significantly enhance the library's impact, ensuring it meets the growing and diverse needs of our community.

50 JEFFERSON STREET



55 3RD STREET

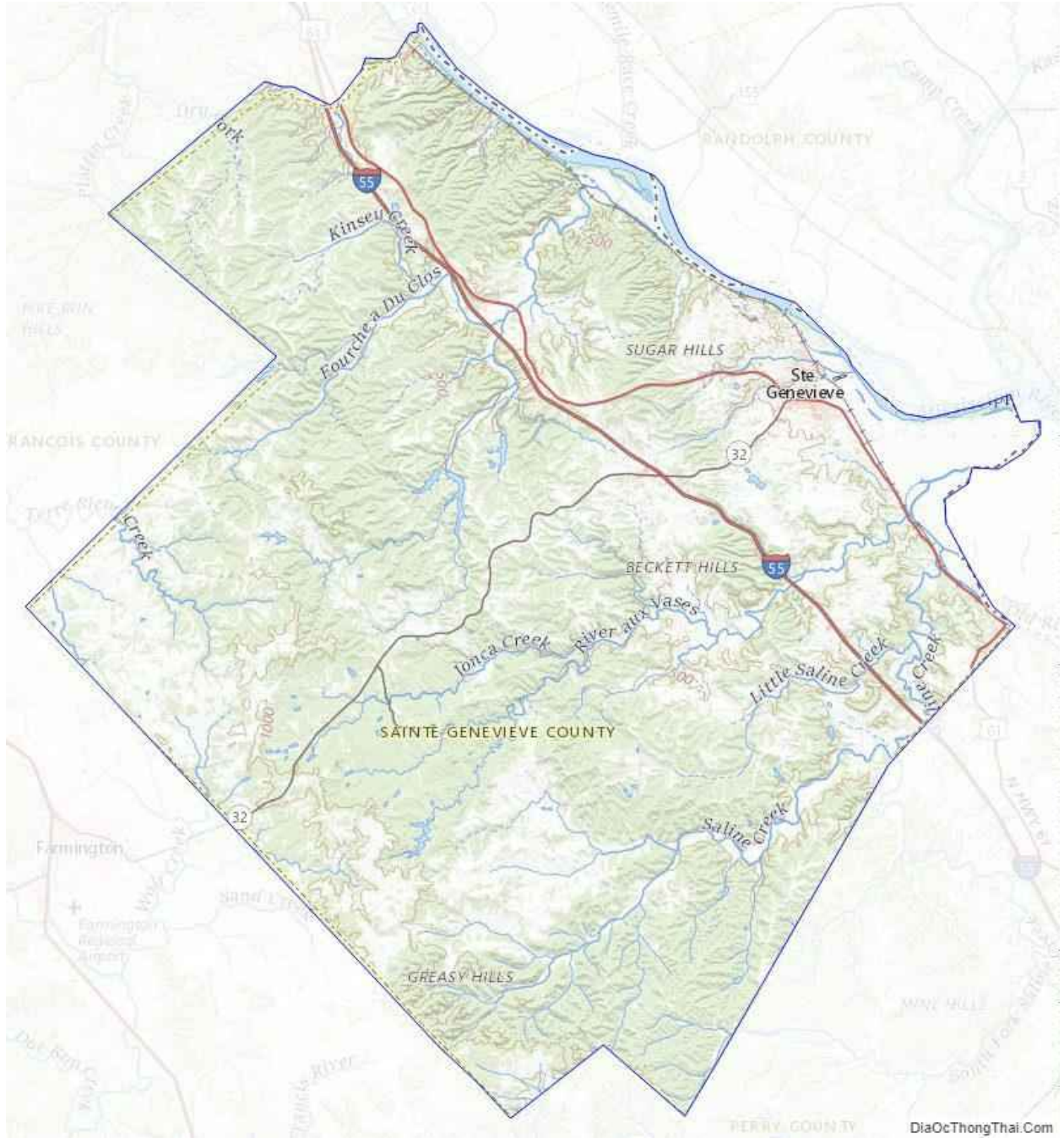


PRELIMINARY ANALYSIS
STE. GENEVIEVE COUNTY PUBLIC LIBRARY



COUNTY MAP; LIBRARY SERVICE AREA

Total Library Service Area



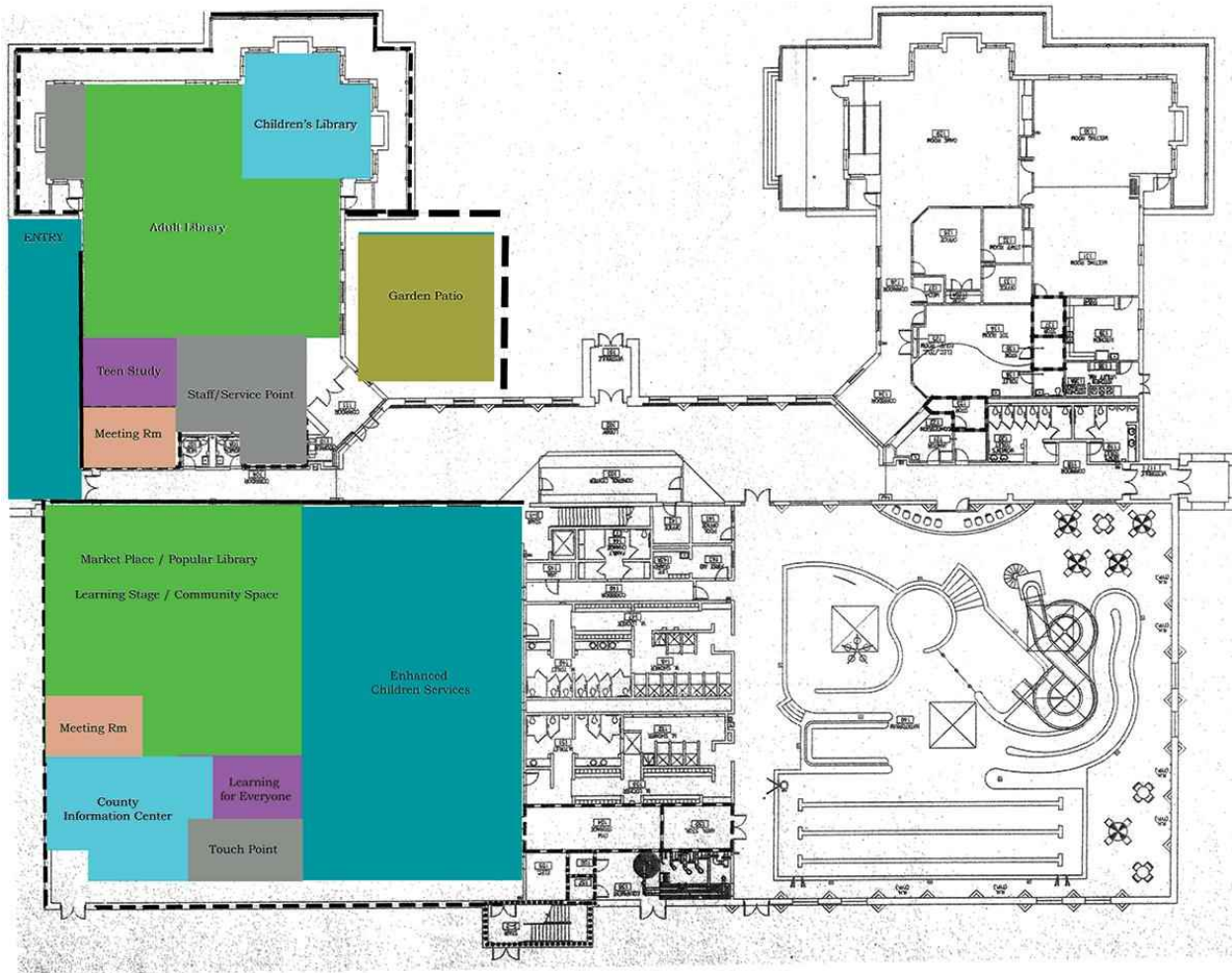
Ste. Genevieve City Map



Current Location of the Library



Library Service Option



- The library can add a patio in 0-18 months without a large budget.
- The library can invest in new meeting and collaborative spaces by using the building program to improve services.
- The community needs are equal to the Gym space in the Recreation Center.
- Additional funding is required to support current standards and provide independent learning opportunities.
- The existing library is too small for the community it serves.
- Public and Private support for the library is strategic. The more we leverage community spirit the greater the impact on education and preserving Ste. Genevieve's culture.