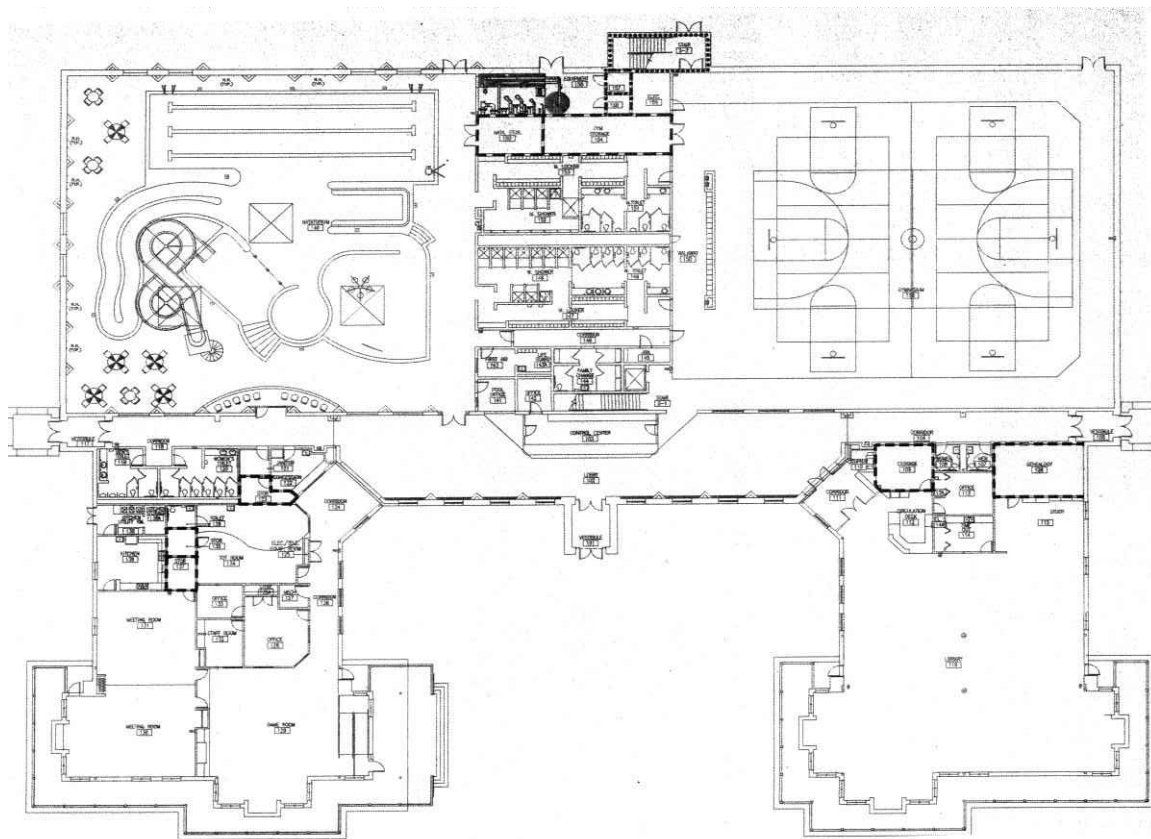


FACILITY BREAKDOWN

The Space Planning Study for the Ste. Genevieve Public Library is a report crafted to guide the library's evolution into an even more accessible, inclusive, and resourceful community haven. As we seek to address both current and future needs, this library planning study emphasizes our commitment to continually enhancing the ways we serve Ste. Genevieve's diverse and dynamic population.

The impetus for this study arises from the library's dedication to community-centered growth. By engaging with residents, educators, local businesses, and various stakeholders, we thoroughly understand the multifaceted needs of our community. The insights gathered from extensive community feedback sessions, facility tours, surveys, and focus groups provide the foundation upon which this report is built.



This document not only highlights the strengths and areas of improvement identified by community members but also sets forth strategic recommendations for spatial reorganization, technological upgrades, innovative programming, and sustainable practices. Our goal is to ensure that the Ste. Genevieve Public Library remains a vibrant and essential institution, capable of adapting to future demands while preserving the core values that define its mission.

By reading this report, stakeholders and community members will gain a deeper understanding of our methodology, findings, and proposed actions to create a more welcoming, comfortable, and meaningful library experience for everyone in the community. We invite you to delve into the detailed examinations and visionary plans outlined in this study as we embark on this transformative journey together.

Library Programming

This approach provides readers with a clear understanding of the purpose and importance of the library space planning study while underscoring the county’s ongoing commitment to its community.

Here is a building program of the library’s needs. It details the space needs for the Ste. Genevieve Public Library. It is our goal to show how improvements could be made to better meet the needs of Ste. Genevieve residents.

On the following pages residences from the community toured the facility and discussed every aspect of the library and what they liked/disliked about it.

STE. GENEVIEVE LIBRARY PROGRAM AREA SIZE SUMMARY										
#	Department Name	Area Name	L.F. of Shelving	Seating	Staff	Room or Area NASF	Subtotal NASF	GSF	COLOR	
1. Retail Space / Library Bookstore Area								1,808		
101		Friends Space TBA (Coffee or other)				1,000			Social Space	
102		Bookstore Display and Counter Area				500				
103		Bookstore Seating Area		4		100				
104		Bookstore office/storage/workrooms				200				
105										
2. Community Space								1,110		
201		Info Desk/Reception				100			Collaborative Space	
202		Group seating		6		150				
203		Open Group Commons/PAV Space		3		200				
204		Flexible Table Seating		12		300				
205		Lounge Seating		8		380				
3. Shared Meeting Room								1,625		
301		Meeting Rm - Adult Program Area		55		1,375			Presentation Space	
302		Meeting Rm - Kitchenette and Storage				250				
4. Touch Point/Circulation								340		
401		Circulation desks w/Security			1	200			Touch Point	
402		Self Check-in/Check-out Stations				80				
403		Pick-up Stations, Shelving (low)				60				
5. Market Place / Popular Library								1,358		
501		Library released Paperbacks (new books)	140			90			Collaborative Space	
502		Stand-out Computer Bar		8		210				
503		Info Commons/PAV gathering space		5		210				
504		Flexible Table Seating		10		360				
505		Lounge Seating		8		280				
506		Shelving, collection, & Seating		6		200				
6. Reference/Information Center								2,888		
601		Touch Point - Ref. Desk & MF mach.		10		350			Reflective Space	
602		Information Commons (public computer seating)		10		350				
603		Printer/Copier/Scanner area				200				
604		Computer Literacy Room for 12		12		360				
605		Reference Collection, Shelving	8			8				
606		Reference Seating		8		200				
607		Group Study/Meeting Room for 6 (1)		6		150				
608		Quiet / Silent Study		8		320				
609		Flexible Study Space-movable barriers		6		150				
7. Adult Collection and Seating								1,480		
701		Touch point/Service Desk							Collaborative Space	
702		Non-Fiction, Special Collection Shelving	500			450				
703		Fiction Collection Shelving	500			450				
704		Media shelving	130			130				
705		Lounge Seating		8		240				
706		Flexible Table Seating		6		210				
8. Learning for Everyone / Maker Space								450		
801		Hands-on Work Center		10		450			Presentation Space	
9. Children Services								1,392		
901		Program Room Storage/Sink				200			Reflective Space	
902		Juvenile Fiction shelving	100			70				
903		Juvenile Non-fiction shelving	60			42				
904		Juvenile Media shelving	60			60				
905		Juvenile Computer Seating		12		300				
906		Table Seating		4		100				
907		Baby Pen and Stroller Parking				120				
908		Children's Hub / Story Hour (Circle)		30		600				
10. Young Adult Cube								405		
1001		YA Fiction/Nonfiction Shelving	50			35			Collaborative Space	
1002		YA Media Shelving	15			10				
1003		Media Productions Space		1		60				
1004		PAV Seating		10		300				
11. Library Administration								700		
1101		Director's Office			1	160			Staff	
1102		Reference Dept Head			1	120				
1103		Children's Department Office			1	120				
1104		Library Assistants			3	120				
1105		Part time Library Assistants			1	80				
1106		Office Storage			1	100				
TOTAL BUILDING			1,563	275	9		12,748	17,210		

Library Entrance

Ste. Genevieve is a beautiful place; one of the best small towns in America. The library needs a dedicated outdoor entrance into the library; the welcoming feel of the site is an example worth noting.



The only reason this entrance is not an A+:

- 1. Need to Construct a Ramp to meet ADA code.
- 2. Open up an entrance into the library.
- 3. No dedicated library signage on this side of building
- 4. This side could potentially be converted into a dedicated outside entrance

Rating=A
Current Condition=D

Long Term Recreation Center



Ste. Genevieve has a unique opportunity to transform and modernize its Recreation Center, creating a vibrant, multi-functional hub for the entire community. By designing a dedicated entrance to the library and upgrading the gym facilities, the County can

significantly enhance both accessibility and user experience. Imagine a County Activity Center that complements the library, offering a cohesive blend of fitness, recreation, and knowledge.

CONSULTANT REVIEW AND COMMENTS

Library Entrance



The entrance can be enhanced to improve access to the library.

The parking area is ample; and there is more parking in the back of the building.

The community should investigate redeveloping the pedestrian pathways in the recreation center and the library.

This picture illustrates how the library add a new children’s library in front part of the site. This may be a design option to pursue.

Rating=C

Visualization of an Entrance



Library Entrance



The entrance is integrated with the recreation center.

The signage is limited; there is not information to support community meetings and programs.

No library entrance is visible from the parking lot and street.

A larger sign could improve access to the library.

Rating=C+

Ste. Genevieve Recreation Center Entrance



The recreation center entrance could be more visually appealing; make it a gathering space for both, Library & Community Center users.

The library does not offer enough seating for adults.

The front - entrance could be integrated into a library welcome zone to enable people to move easily into the Recreation Center.

This entrance is not main thoroughfare. The entrance is accessible for people with disabilities; there are ample handicap spaces in the front of the building.

Rating=D

Circulation Desk



The desk design is traditional; patrons are confronted with the desk upon entry.

There is no security.

People need help with connectivity; computers, tech help, e-readers/e-books. Where is this done? A library thinking of the future needs to have this front and center for both patron interactions and tech assistance.

People get their couriered books from other libraries and check out books at this desk.

It is an opportunity to offer a personal touch, a helpful person who can answer questions.

The office area adjacent to this space, is a bottleneck.

Rating=C

Staff Processing Area

The library material from other libraries and returned items are processed in this small space. Worse yet, the roof access for the entire building resides in this storage area also, which eliminates even more potential storage space. Ste. Genevieve County Library was the 27th library to join the Missouri evergreen consortium. At the end of 2024 there will be 78.



This space will get overtaken with courier space and storage will be even more limited.

Storage is critical to improve staff work. It is limited. The library staff is restricted in this area. The storage room is located next to the desk.

Rethinking storage for the Recreation Center could provide benefits to create flexibility.

Grade=C

Community Space



The children's room is used by families, which creates noise issues. This is an example of how the Ste. Genevieve Public Library provides space for children, first. It is an excellent example of a thriving public library.

Often services are limited by the space provided by the library. The Ste. Genevieve Public Library has a limited amount of space for adults and groups to meet. This limits the library's ability to offer lifelong learning opportunities.

Rating=A- (for space utilization, not for acoustic control)

Computer Area



There are six computers located in the space next to the desk. During one visual scan, a user noted, “It is like a circus when the children in here and the circulation desk is busy. Improve this space!!”

There is limited seating in this area, because of the size of the library.

There is a need for more collaborative space.

Rating=D

Library Print Collection



People love to browse the shelving.

The collection of children's is well-used by the public.

Note technology is changing; more people are using online apps.

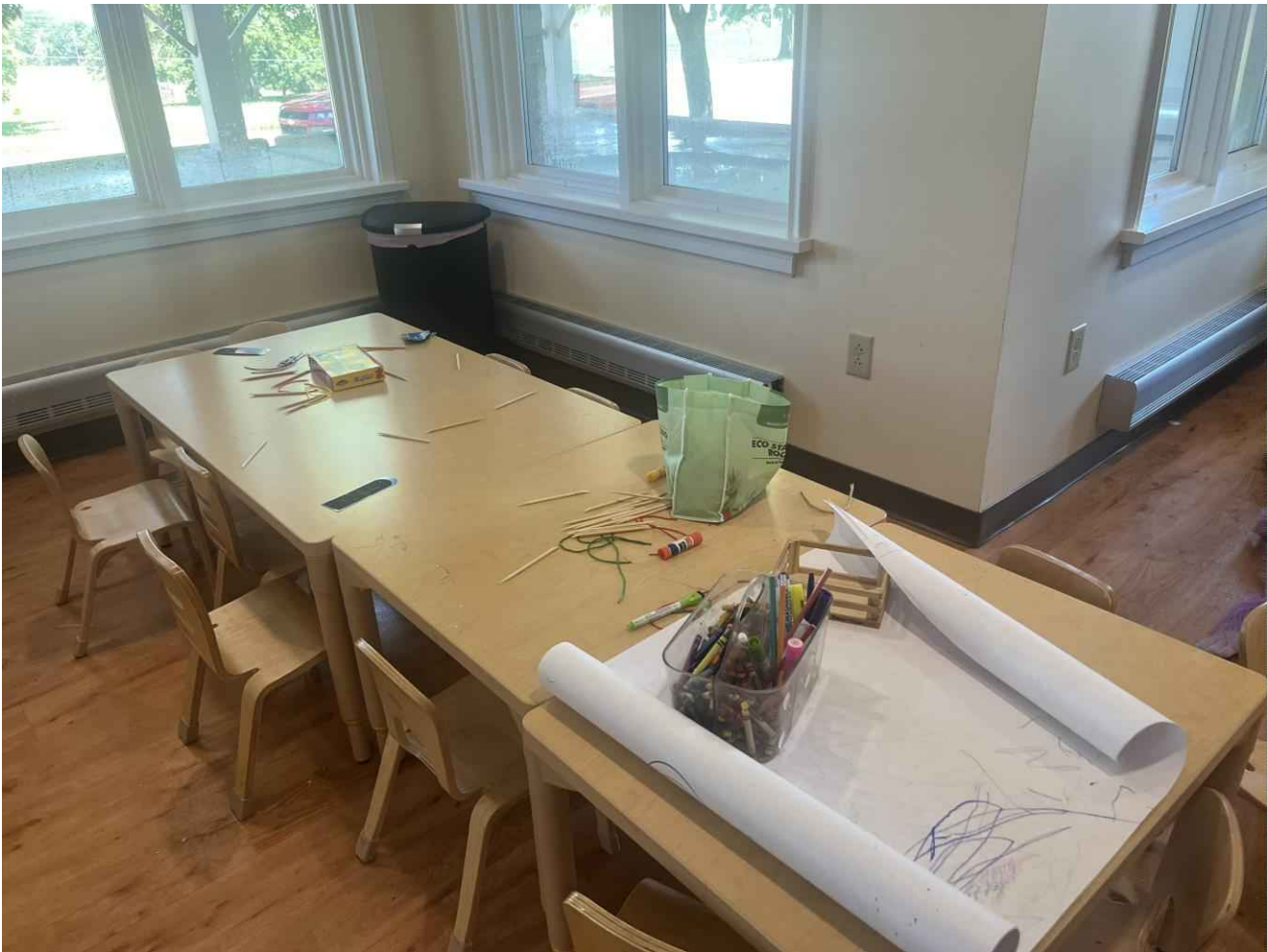
Review the size of the browsable collection(s) for the space allocated.

Space to browse children's books is too high and acoustic issues affect the entire library.

New shelving should be a top priority to have this space fit the comfort of the youth rather than the employees. Finding a good middle ground in shelving would be beneficial.

Rating=B

Crafts Area



Ste. Genevieve residents feel this space is adequate and want to improve it.

This is a good example of space constraints: the library needs more seats for collaborative work (tutoring, making things, programs to support reading, study, etc.) A crucial element to appeal to locals. The lack of quiet seating is a concern.

The porch is inaccessible.

The library needs more children’s spaces.

Rating=C

Children’s Area



Grade C+

The children’s library embodies the spirit of learning.

Create space to inspire the children to play and learn, space with books and games.

Story Time programs are hosted in the main area of the library making it loud and distracting during these times. This noise affects all of the patrons in the library.

Recently, the children’s library was updated. This illustrates that the library can improve services in a phased approach. On the other hand, it illustrates that the library needs more space to support digital literacy.

touch screens and interactive spaces need to be integrated into the design. Mix-furniture creates congested space.

Teen Room



It is critical to have space for teens. Usage statistics in the library have seen a dwindling use by patrons 13+ and there are 2 reasons for that 1. lack of dedicated space and 2. The location of the library itself, making walking to the library a difficult proposition. This space is also heavily used by adults utilizing the furniture for work. So there is truly not a space for only teens.

The teen area is next to the meeting room; teens need an area to study.

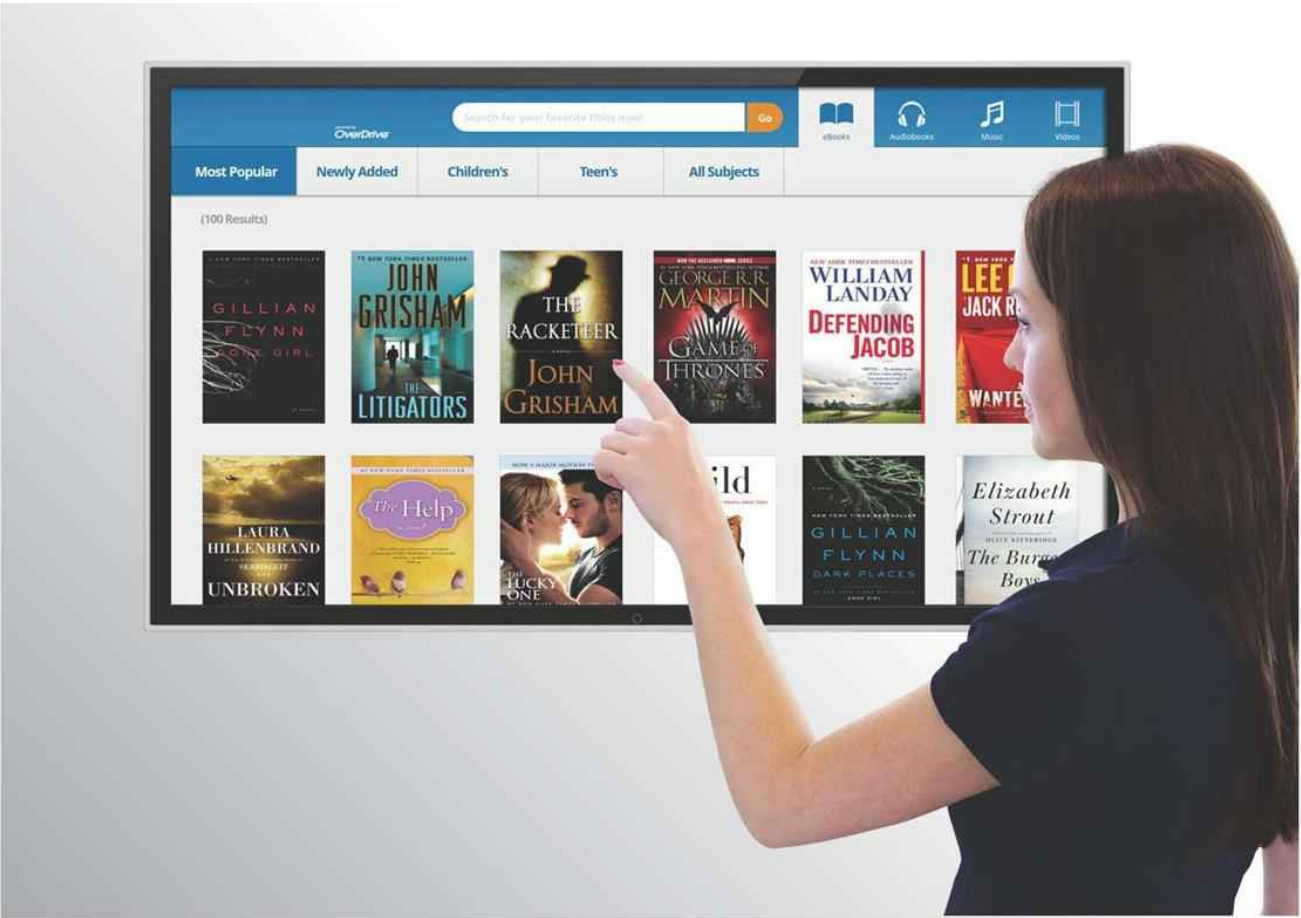
Most teens that use the library are seeking quiet space to read and study.

Tutors need spaces to support student success in the community.

Grade: B

DVD and the Future

The DVD's require security. Items are placed in boxes behind the counter. Patrons retrieve them from the desk. This is not only inefficient but not conducive to patron independence. In the future, patrons will use touch screens to browse digital collections. NOTE: Patrons are unable to utilize the self-checkout without having to seek a staff member thereby defeating the purpose. The library needs to be looking at other collection options that streamline the checkout process without keeping all DVD's behind the counter.



DVD browsing areas and other formats are part of a public library.

The library now provides Hoopla. How can this service improve?

How can we promote digital services?

Grade=B

Ste. Genevieve Library Recreation Center Entrance



The entrance needs to be updated.

The Recreation Center contains shared spaces – desk, meeting rooms, gym and pool.

The Recreation center space could be integrated into the library activity zones and areas. For example, the friends of the library could have a bookstore and café.

This entrance is a thoroughfare for anyone who goes through the Recreation Center and Library.

Rating=C-